

# Ciffo



## Breaking the code

**NEW COLLECTION**  
MILANO DESIGN WEEK 2025

# Ciffo

Da oltre 25 anni, Alessandro Ciffo esplora le potenzialità di un materiale unico: il silicone. Nel tempo, ha sviluppato una tecnica pittorica originale, dando forma a opere in cui arte e materia si fondono in modo inedito.

Tra i risultati più emblematici di questa ricerca c'è la serie *Password*, dove paesaggi nascosti emergono attraverso stratificazioni di tratti colorati in silicone.

In un'epoca in cui i confini tra realtà e virtualità si fanno sempre più sfumati, il motivo *Password* viene oggi reinterpretato con una collezione di arredi dal titolo *Breaking the Code*.

Strati e pennellate di silicone generano superfici vibranti, trasformandole in paesaggi dinamici sospesi tra astrazione e figurazione.

Tra le novità: un tappeto ovale e uno rettangolare, entrambi realizzati con silicone rigenerato.

In un mondo dove la natura si dissolve nel digitale, questa collezione invita a riflettere su ciò che percepiamo come reale. Ogni segno in silicone diventa un codice visivo, una password da decifrare, che invita lo spettatore a fermarsi, osservare e interpretare i segni facendoli propri.

For over 25 years, Alessandro Ciffo has been exploring the potential of a unique material: silicone. Over time, he has developed an original pictorial technique, creating works where art and matter blend in unexpected ways.

One of the most emblematic outcomes of this research is the *Password* series, where hidden landscapes emerge through layered strokes of colored silicone.

In an age where the boundaries between reality and virtuality are increasingly blurred, the *Password* motif is now reimagined in a furniture collection titled *Breaking the Code*.

Layers and brushstrokes of silicone give rise to vibrant surfaces, transforming them into dynamic landscapes suspended between abstraction and figuration.

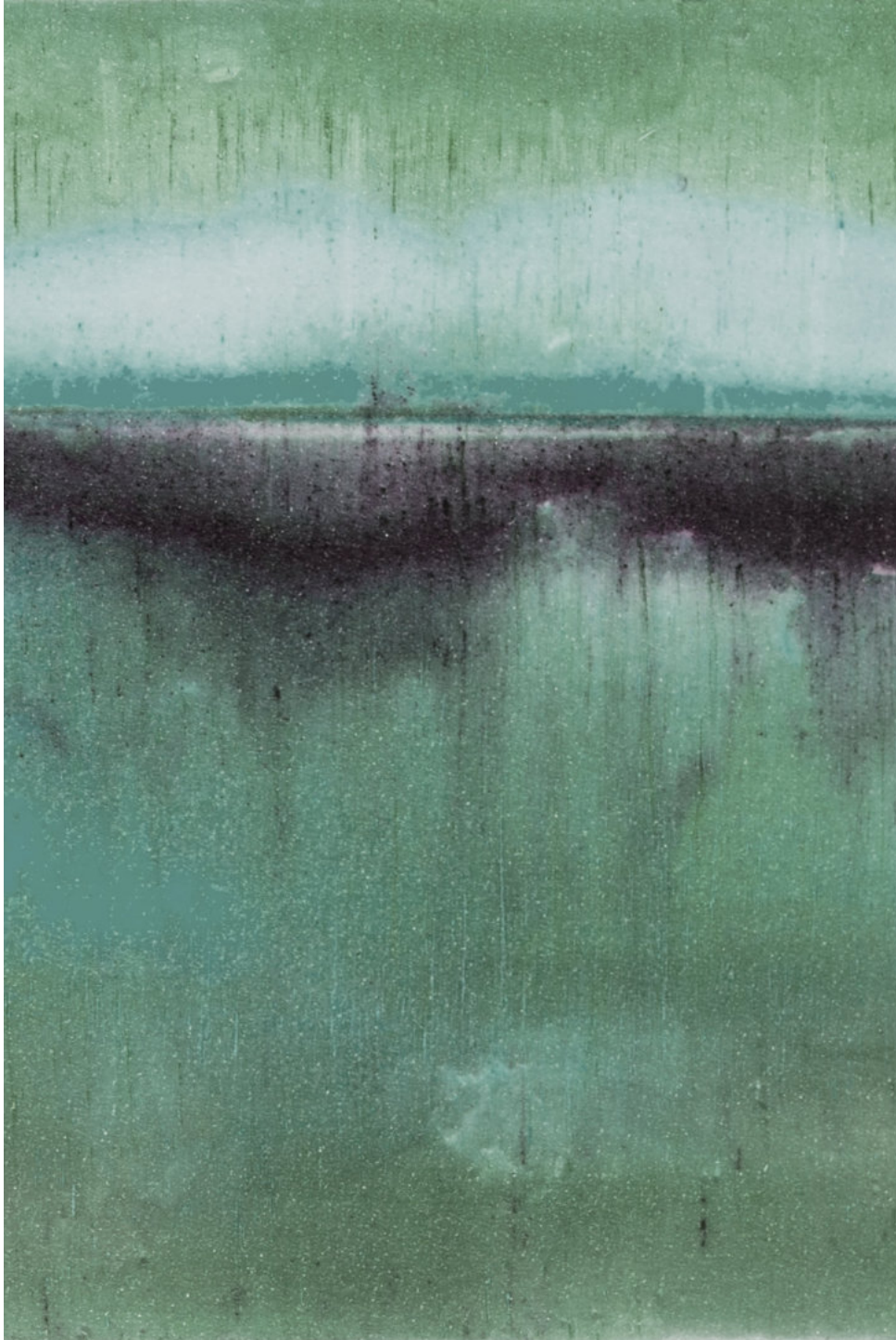
Among the new additions: an oval and a rectangular rug, both made from regenerated silicone.

In a world where nature dissolves into the digital, this collection invites us to reflect on what we perceive as real. Each silicone mark becomes a visual code, a password to decipher—encouraging the viewer to pause, observe, and interpret the signs, making them their own.

## Breaking the code

**NEW COLLECTION**  
MILANO DESIGN WEEK 2025

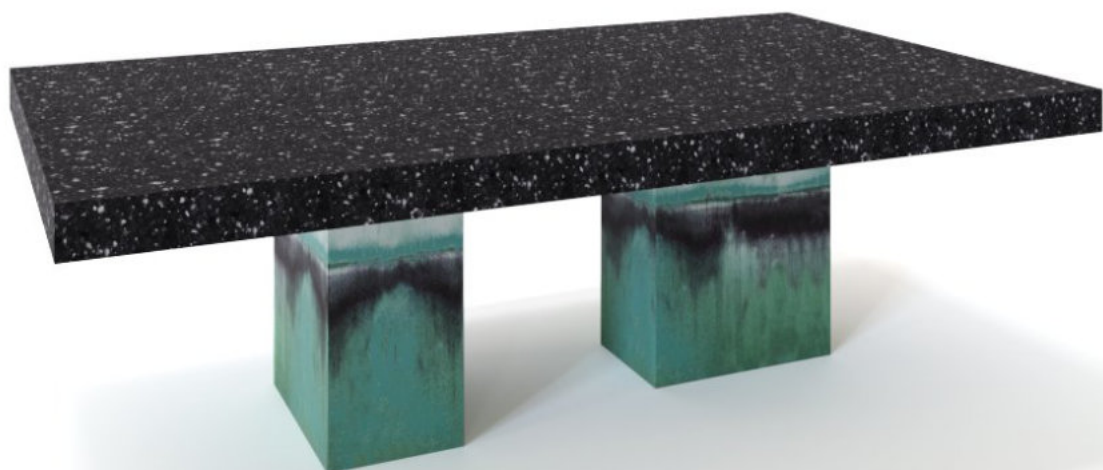
# Ciffo



## Breaking the code

**NEW COLLECTION**  
MILANO DESIGN WEEK 2025

# Ciffo



## Breaking the code

Tavolo 2 gambe / 2 legs table

L 220 W 90 H 73 cm

Cod. mbtc003

Texture: tbtc0100 + tbtc0112

# Ciffo



## Breaking the code

Tavolo 4 gambe / 4 legs table

L 280 W 110 H 73 cm

Cod. mbtc004

Texture: tbtc0100 + tbtc0112

# Ciffo



## Breaking the code

Panca /Bench  
L 180 W 40 H 40 cm  
Cod. mbtc005  
Texture: tbtc0100 + tbtc0112

# Ciffo



## Breaking the code

Consolle  
L 80 W 40 H 75 cm  
Cod. mbtc008  
Texture: tbtc0100 + tbtc0112

# Ciffo



## Breaking the code

Armadio / Cabinet  
L 100 W 40 H 145 cm  
Cod. mbtc009  
Texture: tbtc0100 + tbtc0112



# Ciffo



## Breaking the code

Armadio / Cabinet  
L 130 W 50 H 210 cm  
Cod. mbtc018  
Texture: tbtc0100 + tbtc0112

# Ciffo



## Breaking the code

Madia / Sideboard  
L 140 W 60 H 110 cm  
Cod. mbtc010  
Texture: tbtc0100 + tbtc0112

# Ciffo



## Breaking the code

Cassettiera / Dresser

L 70 W 40 H 125 cm

Cod. mbtc017

Texture: tbtc0100 + tbtc0112

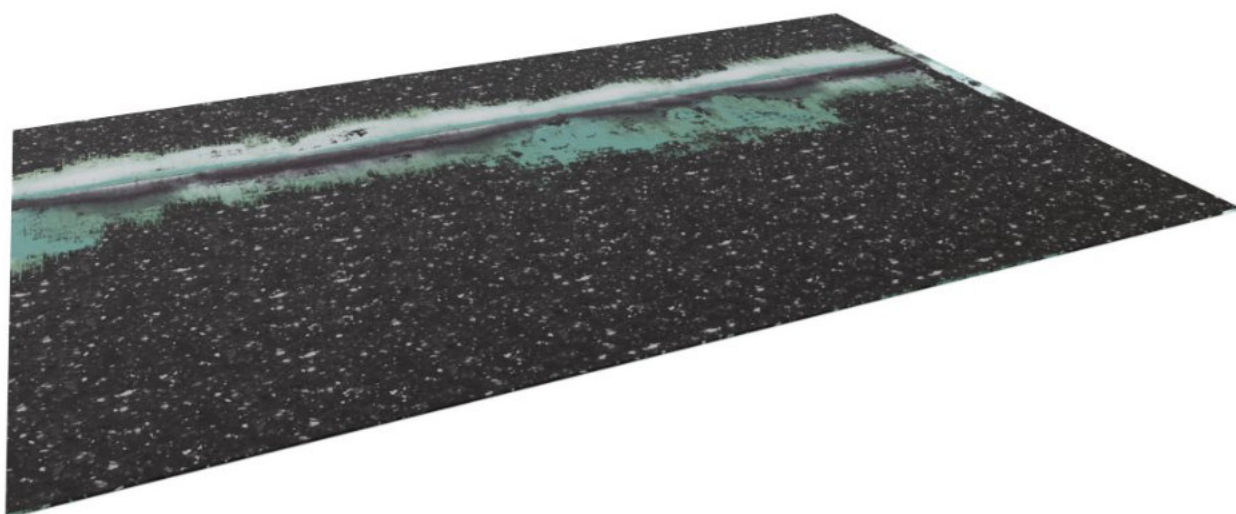
# Ciffo



## Breaking the code

Cassettiera / Dresser  
L 170 W 60 H 110 cm  
Cod. mbtc011  
Texture: tbtc0100 + tbtc0112

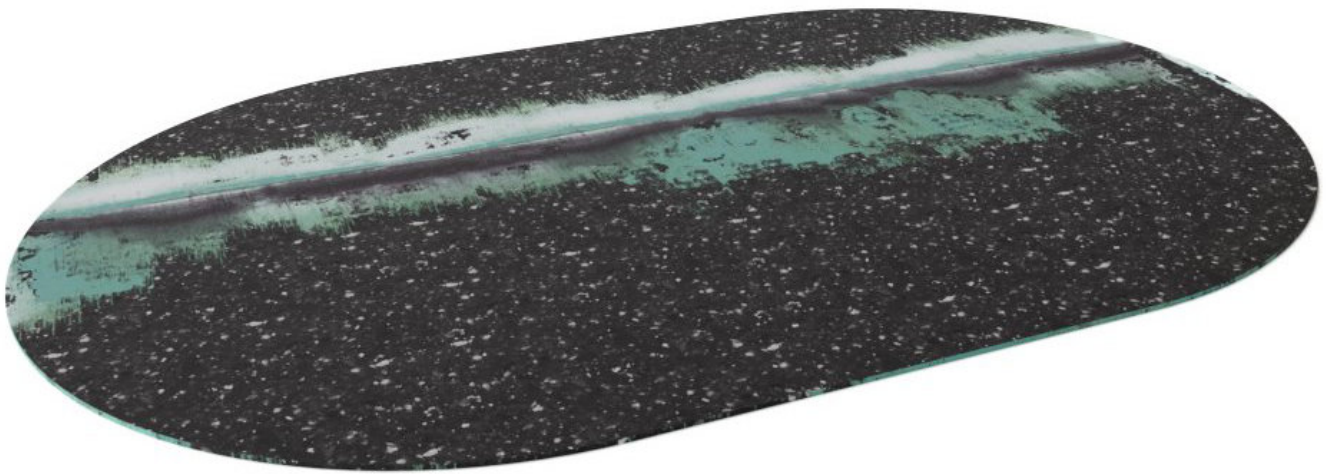
# Ciffo



## Breaking the code

Tappeto / Carpet  
L 280 W 180  
Cod. mbtc019  
Texture: tbtc0100 + tbtc0112

# Ciffo



## Breaking the code

Tappeto / Carpet  
L 280 W 180  
Cod. mbtc020  
Texture: tbtc0100 + tbtc0112

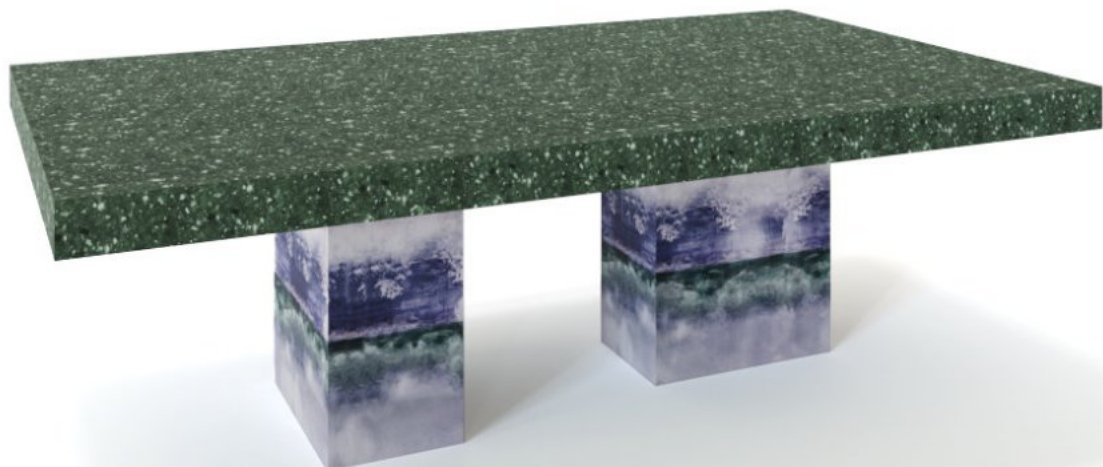
# Ciffo



## Breaking the code

**NEW COLLECTION**  
MILANO DESIGN WEEK 2025

# Ciffo



## Breaking the code

Tavolo 2 gambe / 2 legs table

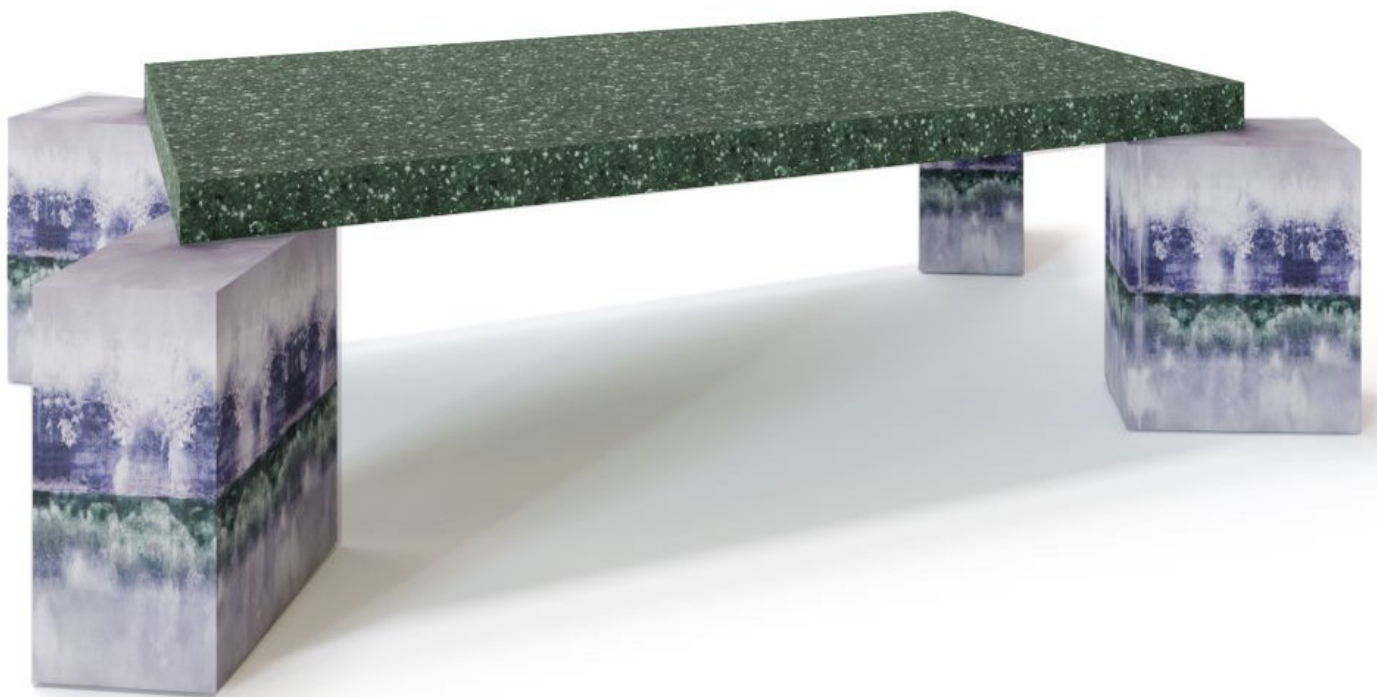
L 220 W 90 H 73 cm

Cod. mbtc003

Texture: tbtc0104 + tbtc0108



# Ciffo



## Breaking the code

Tavolo 4 gambe / 4 legs table

L 280 W 110 H 73 cm

Cod. mbtc004

Texture: tbtc0104 + tbtc0108

# Ciffo



## Breaking the code

Panca /Bench  
L 180 W 40 H 40 cm  
Cod. mbtc005  
Texture: tbtc0104 + tbtc0108

# Ciffo



## Breaking the code

Consolle  
L 80 W 40 H 75 cm  
Cod. mbtc008  
Texture: tbtc0104 + tbtc0108

# Ciffo



## Breaking the code

Armadio / Cabinet  
L 100 W 40 H 145 cm  
Cod. mbtc009  
Texture: tbtc0104 + tbtc0108

# Ciffo



## Breaking the code

Armadio / Cabinet  
L 130 W 50 H 210 cm  
Cod. mbtc018  
Texture: tbtc0104 + tbtc0108

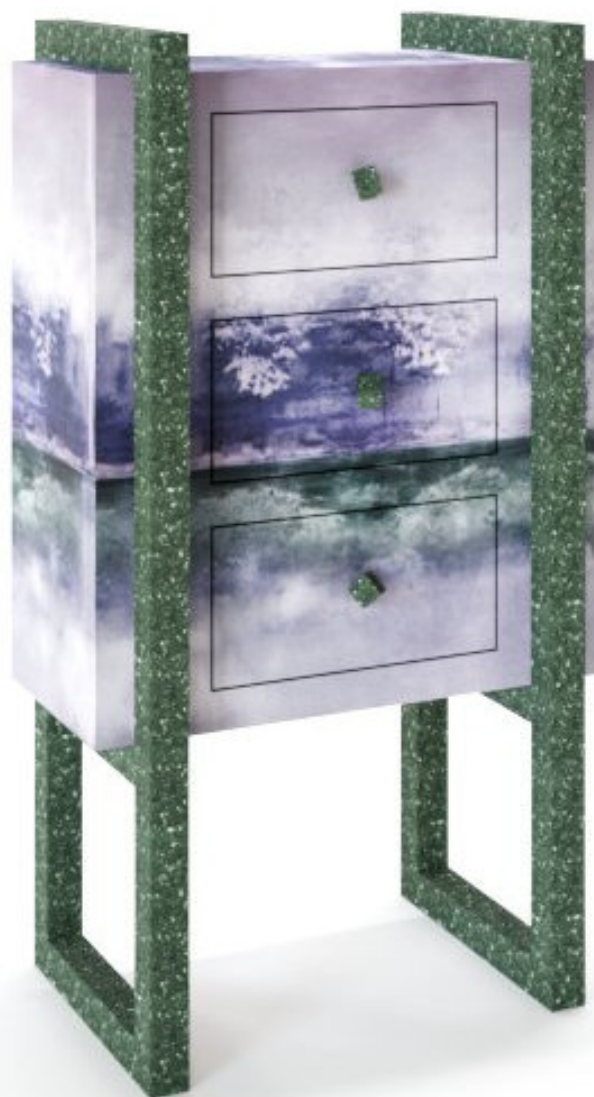
# Ciffo



## Breaking the code

Madia / Sideboard  
L 140 W 60 H 110 cm  
Cod. mbtc010  
Texture: tbtc0104 + tbtc0108

# Ciffo



## Breaking the code

Cassettiera / Dresser  
L 70 W 40 H 125 cm  
Cod. mbtc017  
Texture: tbtc0104 + tbtc0108

# Ciffo

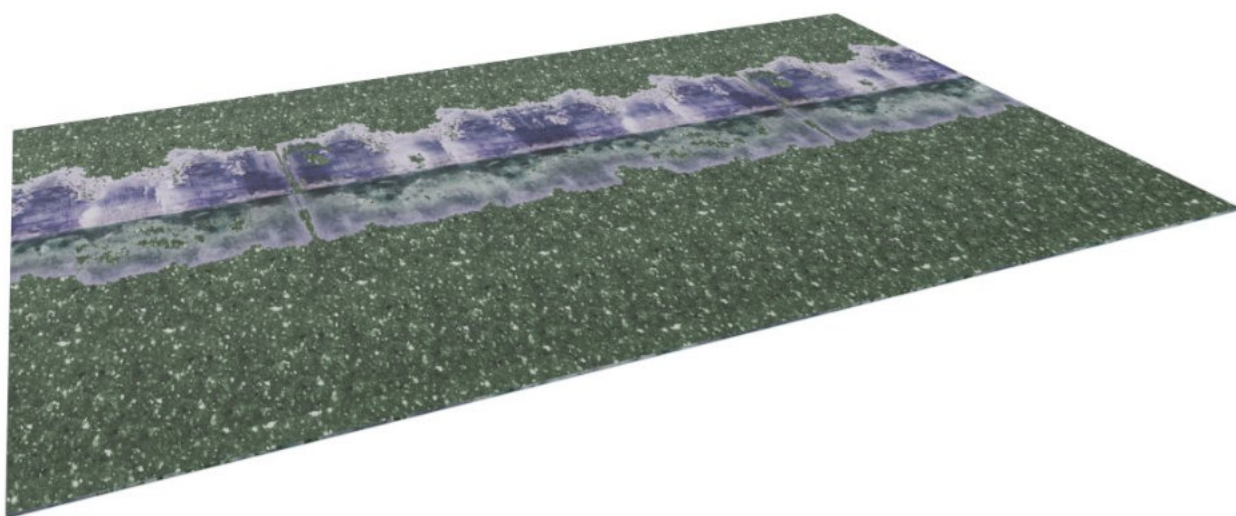


## Breaking the code

Cassettiera / Dresser  
L 170 W 60 H 110 cm  
Cod. mbtc011  
Texture: tbtc0104 + tbtc0108



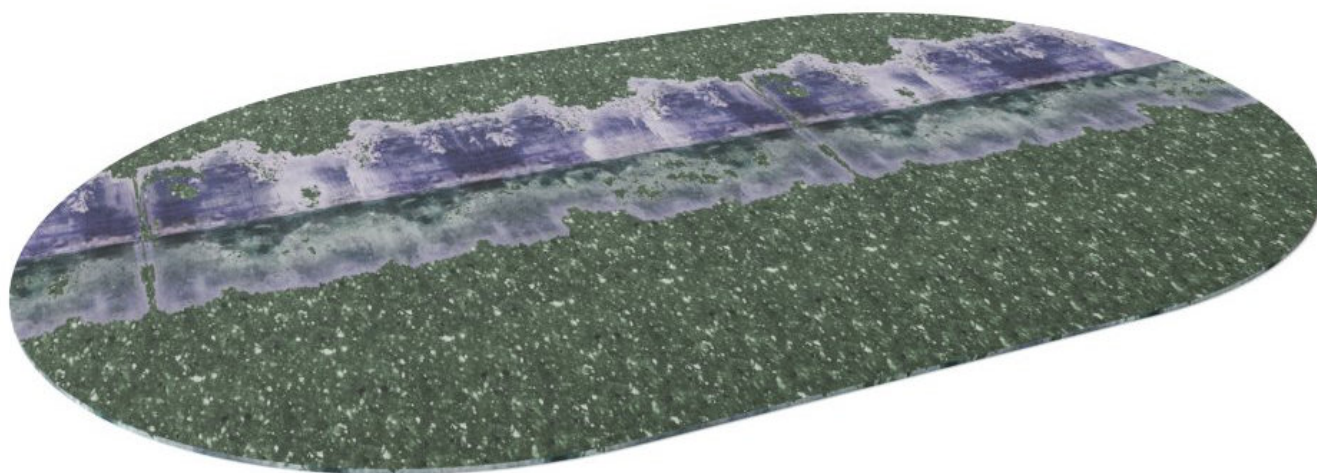
# Ciffo



## Breaking the code

Tappeto / Carpet  
L 280 W 180  
Cod. mbtc019  
Texture: tbtc0104 + tbtc0108

# Ciffo



## Breaking the code

Tappeto / Carpet  
L 280 W 180  
Cod. mbtc020  
Texture: tbtc0104 + tbtc0108

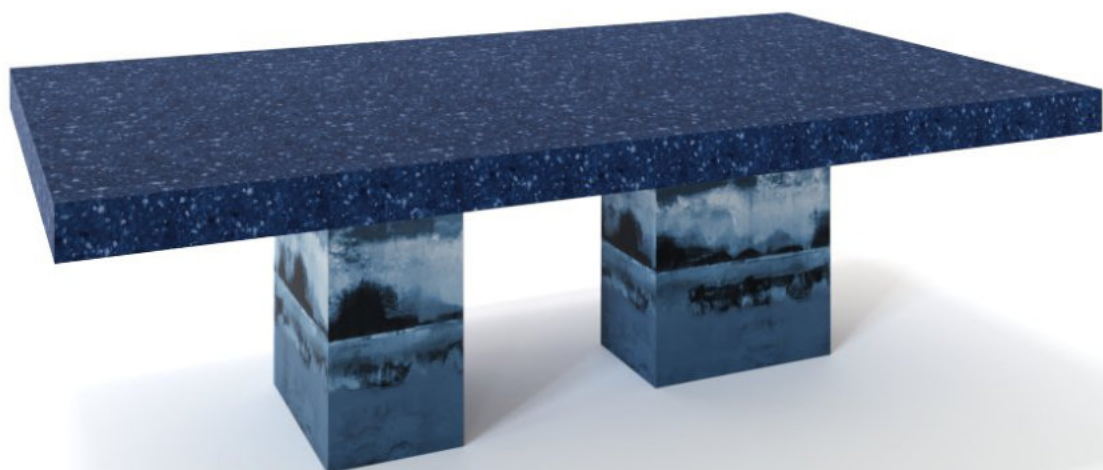
# Ciffo



## Breaking the code

**NEW COLLECTION**  
MILANO DESIGN WEEK 2025

# Ciffo



## Breaking the code

Tavolo 2 gambe / 2 legs table

L 220 W 90 H 73 cm

Cod. mbtc003

Texture: tbtc0106 + tbtc0110

# Ciffo



## Breaking the code

Tavolo 4 gambe / 4 legs table

L 280 W 110 H 73 cm

Cod. mbtc004

Texture: tbtc0106 + tbtc0110

# Ciffo



## Breaking the code

Panca /Bench  
L 180 W 40 H 40 cm  
Cod. mbtc005  
Texture: tbtc0106 + tbtc0110

# Ciffo



## Breaking the code

Consolle  
L 80 W 40 H 75 cm  
Cod. mbtc008  
Texture: tbtc0106 + tbtc0110

# Ciffo



## Breaking the code

Armadio / Cabinet  
L 100 W 40 H 145 cm  
Cod. mbtc009  
Texture: tbtc0106 + tbtc0110



# Ciffo



## Breaking the code

Armadio / Cabinet  
L 130 W 50 H 210 cm  
Cod. mbtc018  
Texture: tbtc0106 + tbtc0110

# Ciffo



## Breaking the code

Madia / Sideboard  
L 140 W 60 H 110 cm  
Cod. mbtc010  
Texture: tbtc0106 + tbtc0110

# Ciffo



## Breaking the code

Cassettiera / Dresser

L 70 W 40 H 125 cm

Cod. mbtc017

Texture: tbtc0106 + tbtc0110

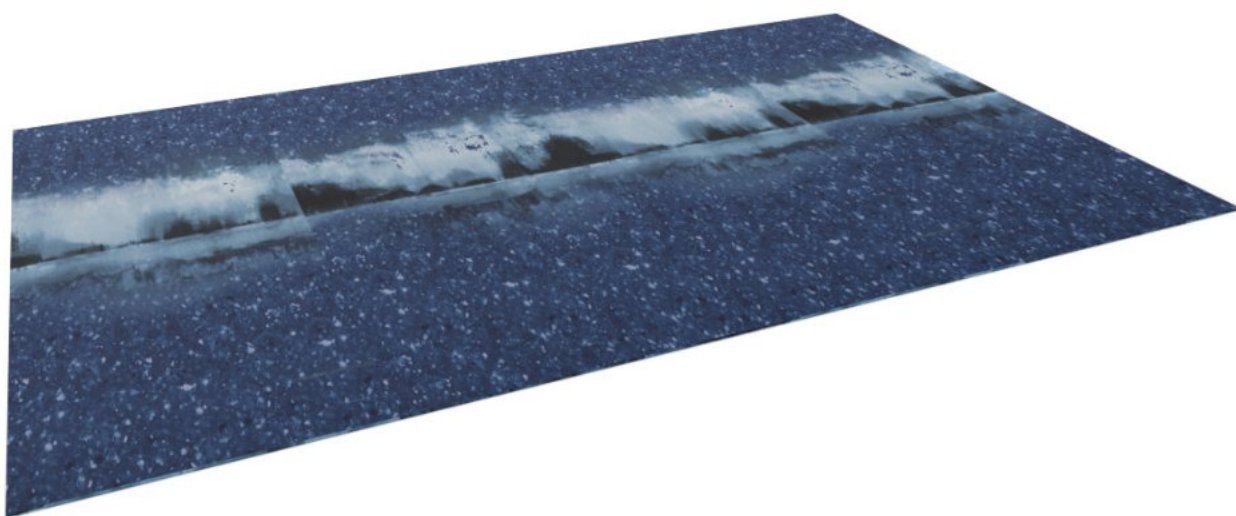
# Ciffo



## Breaking the code

Cassettiera / Dresser  
L 170 W 60 H 110 cm  
Cod. mbtc011  
Texture: tbtc0106 + tbtc0110

# Ciffo



## Breaking the code

Tappeto / Carpet  
L 280 W 180  
Cod. mbtc019  
Texture: tbtc0106 + tbtc0110

# Ciffo



## Breaking the code

Tappeto / Carpet  
L 280 W 180  
Cod. mbtc020  
Texture: tbtc0106 + tbtc0110

# Ciffo



## Breaking the code

**NEW COLLECTION**  
MILANO DESIGN WEEK 2025

# Ciffo



## Breaking the code

Tavolo 2 gambe / 2 legs table

L 220 W 90 H 73 cm

Cod. mbtc003

Texture: tbtc0109 + tbtc0111



# Ciffo



## Breaking the code

Tavolo 4 gambe / 4 legs table

L 280 W 110 H 73 cm

Cod. mbtc004

Texture: tbtc0109 + tbtc0111

# Ciffo



## Breaking the code

Panca /Bench  
L 180 W 40 H 40 cm  
Cod. mbtc005  
Texture: tbtc0109 + tbtc0111

# Ciffo



## Breaking the code

Consolle  
L 80 W 40 H 75 cm  
Cod. mbtc008  
Texture: tbtc0109 + tbtc0111

# Ciffo



## Breaking the code

Armadio / Cabinet  
L 100 W 40 H 145 cm  
Cod. mbtc009  
Texture: tbtc0109 + tbtc0111

# Ciffo



## Breaking the code

Armadio / Cabinet  
L 130 W 50 H 210 cm  
Cod. mbtc018  
Texture: tbtc0109 + tbtc0111

# Ciffo



## Breaking the code

Madia / Sideboard  
L 140 W 60 H 110 cm  
Cod. mbtc010  
Texture: tbtc0109 + tbtc0111

# Ciffo



## Breaking the code

Cassettiera / Dresser  
L 70 W 40 H 125 cm  
Cod. mbtc017  
Texture: tbtc0109 + tbtc0111

# Ciffo



## Breaking the code

Cassettiera / Dresser  
L 170 W 60 H 110 cm  
Cod. mbtc011  
Texture: tbtc0109 + tbtc0111



# Ciffo



## Breaking the code

Tappeto / Carpet  
L 280 W 180  
Cod. mbtc019  
Texture: tbtc0109 + tbtc0111

# Ciffo

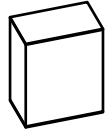


## Breaking the code

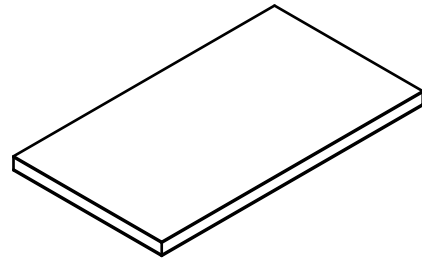
Tappeto / Carpet  
L 280 W 180  
Cod. mbtc020  
Texture: tbtc0109 + tbtc0111

# Breaking the code

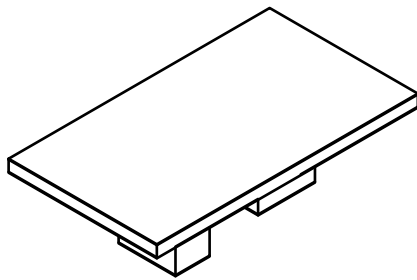
## COLLECTION



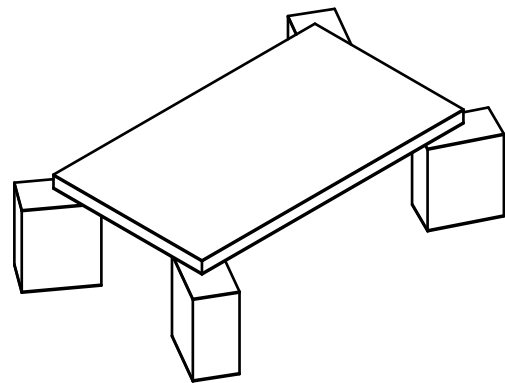
Piede tavolo / Table leg  
L 30 W 60 H 63 cm  
Cod. mbtc001



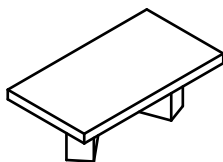
Piano tavolo / Table top  
L 230 W 100 H 8 cm  
Cod. mbtc002



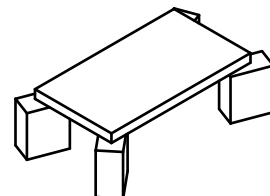
Tavolo 2 gambe / 2 legs table  
L 220 W 90 H 73 cm  
Cod. mbtc003



Tavolo 4 gambe / 4 legs table  
L 280 W 110 H 73 cm  
Cod. mbtc004



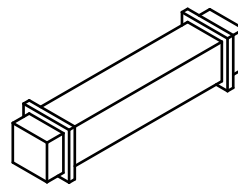
Tavolo basso 2 gambe / Low table 2 legs  
L 100 W 55 H 35 cm  
Cod. mbtc014



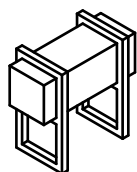
Tavolo basso 4 gambe / Low table 4 legs  
L 120 W 70 H 35 cm  
Cod. mbtc015

# Breaking the code

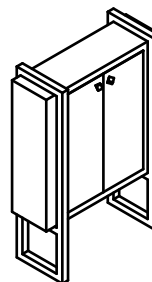
COLLECTION



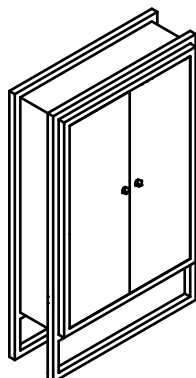
Panca /Bench  
L 180 W 40 H 40 cm  
Cod. mbtc005



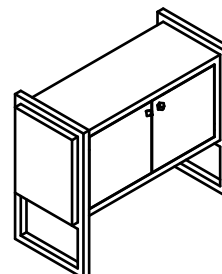
Consolle  
L 80 W 40 H 75 cm  
Cod. mbtc008



Armadio /Cabinet  
L 100 W 40 H 145 cm  
Cod. mbtc009



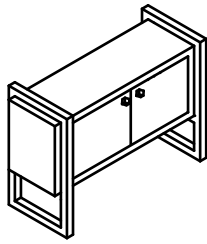
Armadio /Cabinet  
L 120 W 50 H 210 cm  
Cod. mbtc018



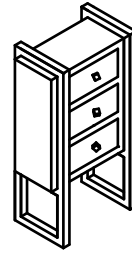
Madia / Sideboard  
L 140 W 60 H 110 cm  
Cod. mbtc010

# Breaking the code

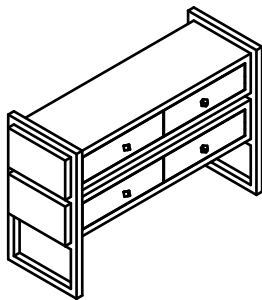
COLLECTION



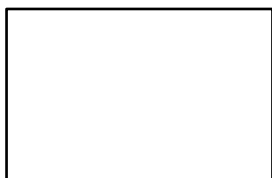
Madia bassa / Low sideboard  
L 125 W 48 H 85 cm  
Cod. mbtc016



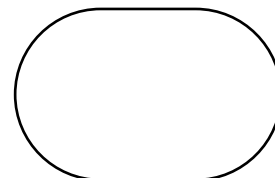
Cassettiera / Dresser  
L 70 W 40 H 125 cm  
Cod. mbtc017



Cassettiera / Dresser  
L 170 W 60 H 110 cm  
Cod. mbtc011



Tappeto / Carpet  
L 280 W 180  
Cod. mbtc019

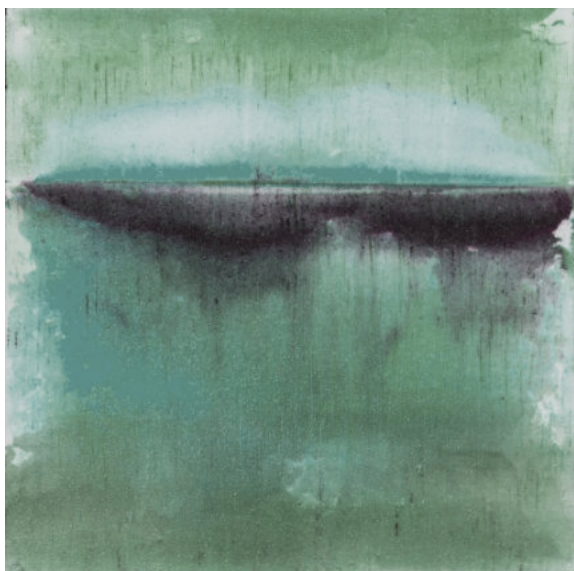


Tappeto / Carpet  
L 280 W 180  
Cod. mbtc020

# Textures

Ogni prodotto della collezione può essere realizzato, su richiesta, con le seguenti textures:

Each product in the collection can be produced with the following textures on request:



Cod. tbtc0100



Cod. tbtc0101



Cod. tbtc0102



Cod. tbtc0103



Cod. tbtc0104



Cod. tbtc0105



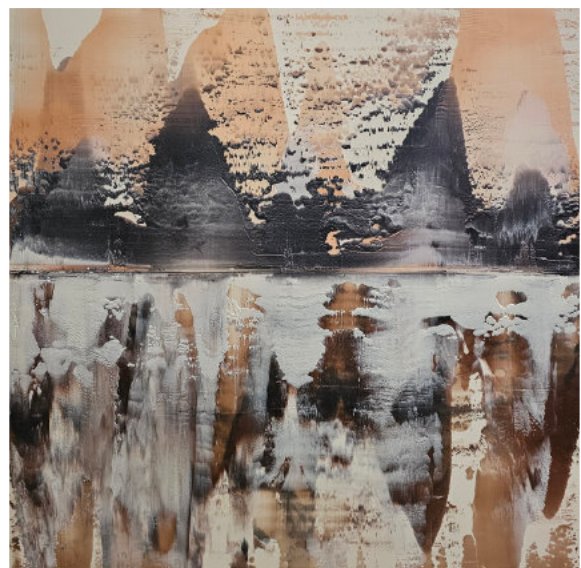
Cod. tbtc0106



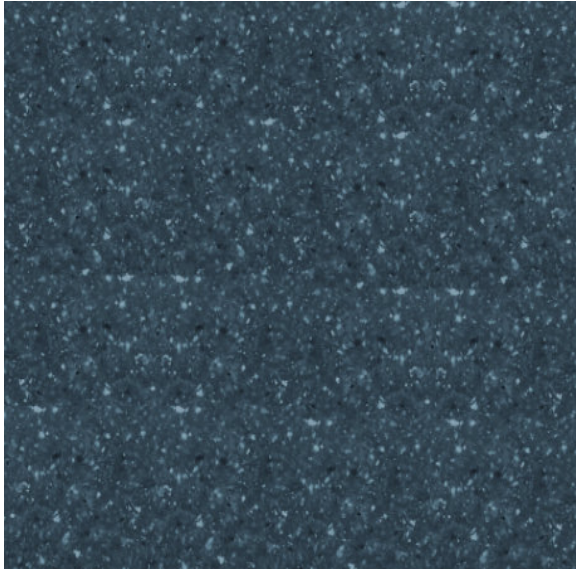
Cod. tbtc0107



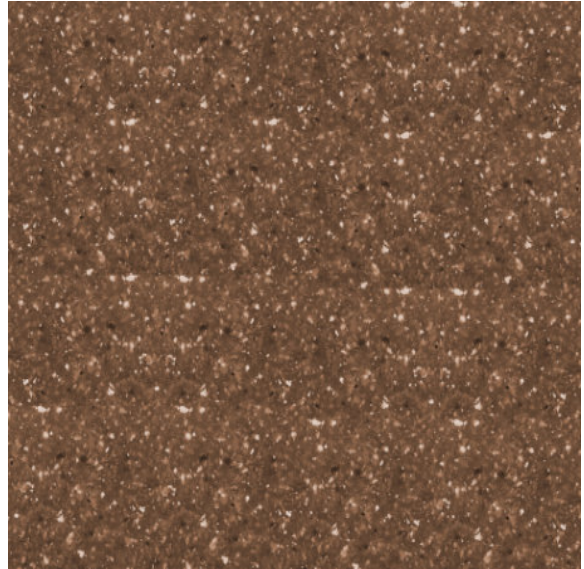
Cod. tbtc0108



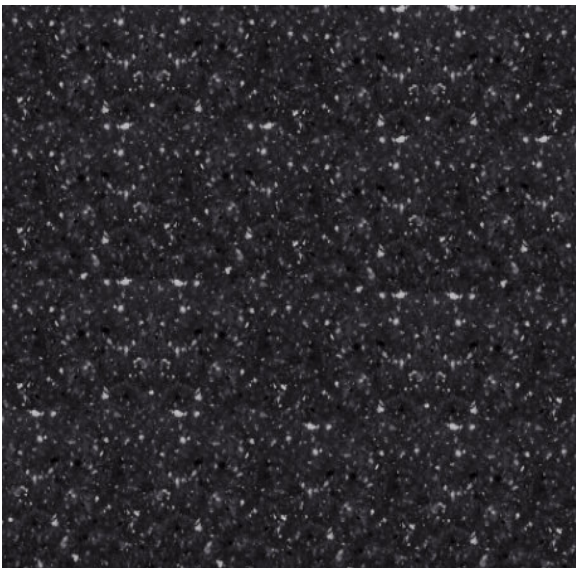
Cod. tbtc0109



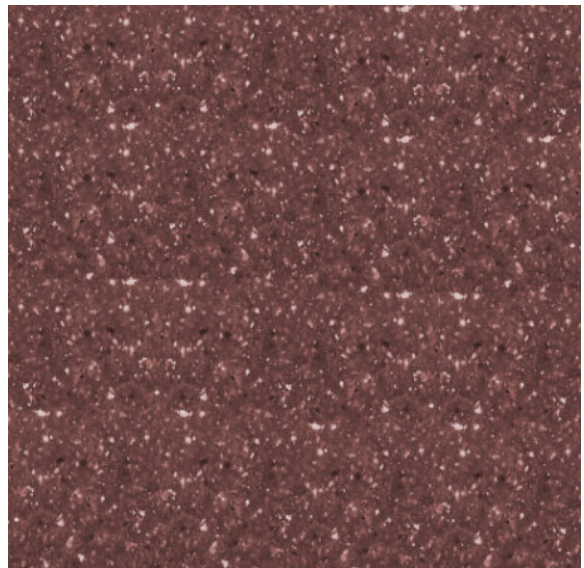
Granito blu - Cod. tbtc0110



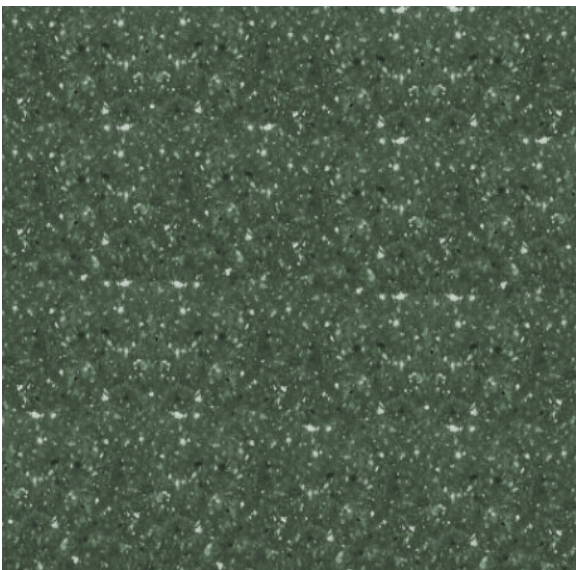
Granito marrone - Cod. tbtc0111



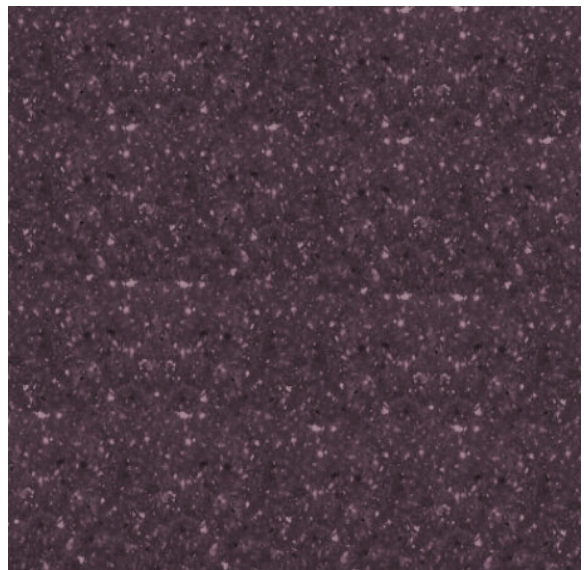
Granito nero - Cod. tbtc0112



Granito rosso - Cod. tbtc0113



Granito verde - Cod. tbtc0108



Granito viola - Cod. tbtc0109



# Ciffo

Alessandro Ciffo dal 1997 produce e distribuisce nel mondo, attraverso i canali di prestigiose gallerie milanesi, collezioni di opere considerate crocevia tra arte e design.

Autoformazione e autoproduzione sono le parole chiave del suo percorso, caratterizzato dalla sperimentazione a tutto tondo delle caratteristiche tecniche ed emozionali del silicone, suo unico medium, capace di esprimere un linguaggio contemporaneo, originale e in continua evoluzione.

Nel 1998 presenta la prima collezione di vasi interamente realizzati in silicone dal 1999 al 2022 realizza piu' di 30 collezioni di vasi e accessori per la casa, alternando limited edition a pezzi unici; parallelamente avvia la ricerca bidimensionale, proposta come "silicone painting" e crea i presupposti per nuove soluzioni cromatiche e grafiche applicabili al settore dell'arredamento

Nella sua ricerca è importante il dialogo con le discipline e i materiali che hanno sviluppato le grandi maestranze italiane, dalla pietra e il marmo, alle ceramiche e il vetro, da Carrara a Faenza da Vietri a Murano.

Gli ultimi anni sono caratterizzati dalla nuova collaborazione con la galleria milanese Rossana Orlandi con la quale intraprende la sfida della sostenibilità e della responsabilità dell'arte, introducendo un ciclo di riutilizzo totale degli scarti di produzione del proprio atelier.

Since 1997, Alessandro Ciffo has been producing and distributing worldwide, through the channels of prestigious Milanese galleries, collections of works considered to be at the crossroads between art and design.

Self-education and self-production are the keywords of his path, characterised by allround experimentation with the technical and emotional characteristics of silicone, his only medium, capable of expressing a contemporary, original and constantly evolving language.

In 1998 he presented the first collection of vases made entirely of silicone from 1999 to 2022, he realised more than 30 collections of vases and home accessories, alternating limited editions with unique pieces; at the same time he started two-dimensional research, proposed as "silicone painting" and created the premises for new chromatic and graphic solutions applicable to the furnishing sector

Important in his research is the dialogue with the disciplines and materials developed by the great Italian craftsmen, from stone and marble to ceramics and glass, from Carrara to Faenza from Vietri to Murano.

The last few years are characterised by his new collaboration with the Milanese gallery Rossana Orlandi, with whom he takes up the challenge of sustainability and responsibility in art, introducing a cycle of total reuse of production waste from his atelier.

# Ciffo

## **CONTACT:**

**XXI SILICO S.a.s.**  
**Alessandro Ciffo**  
Via del Romanino, 16  
13871 Benna (BI)

[www.ciffo.art](http://www.ciffo.art)  
[info@alessandrociffo.it](mailto:info@alessandrociffo.it)

## **SALES CONTACT:**

**ROSSANA ORLANDI**  
Via Matteo Bandello, 14  
20123 Milano (MI)

+39 02 4674471  
[www.rossanaorlandi.com](http://www.rossanaorlandi.com)  
[milano@rossanaorlandi.com](mailto:milano@rossanaorlandi.com)

**Graphics:** [maurizioprina.com](http://maurizioprina.com)  
**Render :** Daniela Varela